

2 plugs plus 2 original flip lever controllers



Your ONLY source for reconditioned Lionel O Gauge 3- rail track!

TinMan3Rail.com is your best source for quality Lionel O gauge 3-rail track and accessories. Our track is inspected and reconditioned as necessary to enable you to build a great running layout. Properly installed and maintained, our track will prevent electrical dead spots and derailments.

You can choose from our 3 track grades to get great looking, great performing track while keeping it within your budget. And we back all our products with a comprehensive warranty to make sure you're satisfied with your purchase.

We employ many cleaning and reconditioning processes to give to you, our fellow hobbyists, track that will work perfectly when you receive it, with a minimum amount of attention down the road. We concentrate on the tops of the rails and the insides of the outside rails, which touch the wheels, and electrical contacts. These areas receive the maximum polishing we dare. The integrity of the original finish must be preserved. No matter which grade you buy, you can be assured they will work well.

Tired of wasting your time searching old hobby stores, want ads and garage sales, only to find corroded and damaged track? Looking for track that matches the high quality of your trains? With ***TinMan3Rail.com***, you can easily acquire all the quality track you need, and devote your time to building your railroad empire!

WWW.TINMAN3RAIL.COM

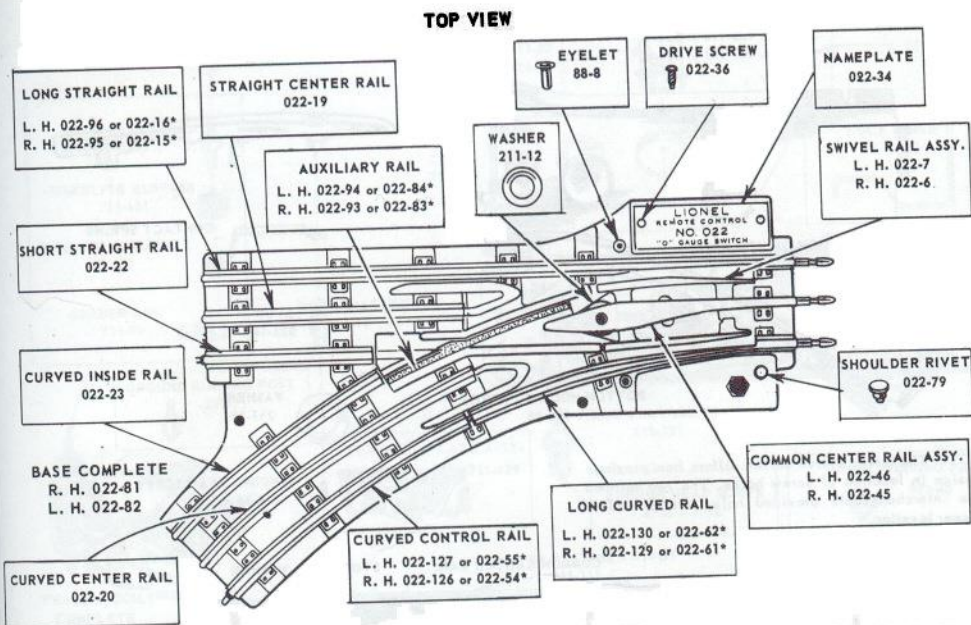
A tip for you regarding crimping on the spade connectors. The wires are pretty thin and are not structurally strong enough to take a normal crimp. What we do here is strip the insulation off about 3/8" worth or so, then we fold the wires over the insulation on the wire. Then we put the spade connector over both the wire and the insulation and crimp it. By doing this the crimping force is now on the vinyl insulation as well as the wire, much stronger.

WIRING DIRECTIONS FOR YOUR NEW SWITCH

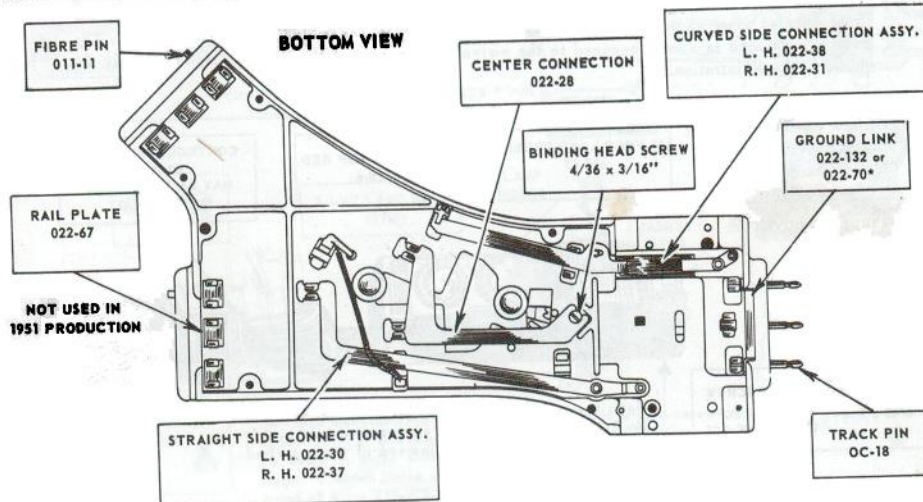
THE 3' CABLE: THE RED WIRE SHOULD BE WIRED TO ACCESSORY POWER TO POWER THE SWITCH. THE BLACK WIRE SHOULD BE TIED INTO YOUR TRACK POWER THAT SUPPLIES THE POWER TO THE CENTER RAIL IN THE LOOP YOUR SWITCH IS INSTALLED IN. THE YELLOW WIRE SHOULD BE WIRED TO ANY ONE OF THE "COMMON" CONNECTORS ON YOUR TRANSFORMER.

THE 8' LONG CABLE: THE RED WIRE GOES TO THE RED WIRE ON THE BOOTSTRAP, THE BLACK WIRE TO THE BLACK WIRE ON THE BOOTSTRAP. THE BLUE WIRE GOES TO THE LEFT OUTSIDE SCREW TERMINAL ON THE SWITCH, THE YELLOW TO THE RIGHT HAND SCREW. NOTHING TO THE CENTER TERMINAL. NOTE: IF THE SWITCH WORKS BACKWARDS, IE RED SHOULD BE GREEN ETC. SWAP THE YELLOW & GRN





Illustrations on this page show the top and bottom views of the left-hand switch base. The companion right-hand switch base is its mirror image except for the location of the steel track pins and the section which makes contact with the switch motor. In 1950 a number of changes were made to facilitate production. However, the old parts, marked by asterisks, may be used interchangeably with the new parts except as noted.



THANK YOU FOR YOUR PURCHASES !

WE ARE VERY MUCH INTO THE O GAUGE HOBBY OURSELVES AND DECIDED WE WANTED TO STAY WITH THE OLDER TINPLATE TRACK. WE GOT QUITE FRUSTRATED WHEN WE TRIED TO BUY GOOD QUALITY TRACK AT REASONABLE PRICES. THUS THE REASON FOR OUR NEW BUSINESS. WE ENCLOSED A SAMPLE OF OUR TRACKS THAT YOU MAY HAVE AN INTEREST IN.

IF YOU HAVE A NEED FOR SOME ADDITIONAL TRACK, LET US KNOW AT: CONTACT@TINMAN3RAILCOM. OR 262-914-0057 WHEN YOU HAVE TIME, CHECK OUT OUR WEB SITE. LOTS OF COOL STUFF THERE, ALONG WITH SOME TIPS AND TRICKS THAT MAY BE USEFUL TO YOU. ENJOY YOUR PURCHASE AND REMEMBER EVERYTHING WE SELL HAS A 90 DAY WARRANTY.